



NORTH JERSEY TU NEWS

Oct. 2010 TU NEWS—VISIT US AT www.nnjtu.org

MESSAGE FROM THE PRESIDENT:

As everyone is aware, on Saturday September 25, 2010 we officially kicked off the Big Flatbrook Project by installing a kiosk at the Three Bridges parking lot on the Flatbrook River. Eleven (11) chapter members volunteered their time and energy to make sure that the kiosk was installed securely.

Many thanks to chapter member Gary Ervey for donating his equipment, John Nordstedt for building the kiosk, Ken Gracek for taking pictures, Brian Cowden for obtaining the State's permission, and Glenn Zeeck our conservation chairman for pulling everything together. And of course thank you to everyone else who came out and dug holes, pushed dirt around, painted, hammered and drove in some screws! We could not have done it without everyone's help!

Take a look at the pictures of the kiosk inside this newsletter and be sure note the postings inside the kiosk.

Our next project on the Flatbrook River is the Flatbrook Float-stocking project which will take place on October 14, 2010. And this project will be followed by the Riparian Tree Planting project on November 7, 2010.

Tightlines, Dave King, President

WORDS TO FISH BY . . .

**Fish are strange creatures.
They're even more unpredictable than women -
and that's going some.**

- R.V "Gadabout" Gaddis (1967)

OCTOBER MEETING NOTICE

Our next chapter meeting will be held on **OCTOBER 27, 2010** the third Wednesday of the month, 7:30 PM at The Recreation Hall at Camp Jefferson. Take exit 34B off Route 80, to the Route 15 North exit. Travel North on Route 15 past the fourth traffic light. After the fourth light, you will pass a Pathmark Supermarket entrance on the left. At this point, be sure that you move into the right lane and take the second ramp on the right to Weldon Road (immediately after the Lake Shawnee exit ramp). This exit puts you directly onto Weldon Road, and the camp is a short distance, on your left.

NOTICE

THE OCTOBER MEETING

DATE HAS BEEN

CHANGED TO

OCTOBER 27, 2010!

SAME TIME

SAME PLACE!

JUST ONE WEEK LATER!

NOTICE

CALENDAR

CHAPTER NEWSLINE

OCTOBER	
6	Board Meeting, 7:30 pm Camp Jefferson
9	Musky One Fly
12	FLATBROOK FLOATSTOCKING
20	Chapter Meeting, 7:30 pm Camp Jefferson
27	TIC EGG DELIVERY DAY
NOVEMBER	
3	Board Meeting, 7:30 pm Camp Jefferson
7	RIPARIAN TREE PLANTING AT THREE BRIDGES
10	Chapter Meeting, 7:30 pm Camp Jefferson
13	TENTATIVE CHAPTER SALMON RIVER TRIP
20- 21	INTERNATIONAL FLY TYING SYMPOSIUM, SOMERSET NJ
DECEMBER	
1	Board Meeting, 7:30 pm Camp Jefferson
15	Chapter HOLIDAY PARTY , 7:30 pm Camp Jefferson

HOLIDAY PARTY

The December Holiday Party is scheduled for December 15. As usual, we will play the 'Exchange Game'. Bring a wrapped gift valued at \$25 to exchange. This is always a very, very fun game. In addition, bring your favorite covered dish. The chapter will supply the paper goods and non-alcoholic refreshments.

OFFICER ELECTIONS

Yes, its that time of year again, we are looking for brave souls to volunteer for officer and board of trustee positions! If you are interested please see president Dave King or send him an email at dking@brittashan.com or give him a call at (973) 222-2114.

FLY TYING SYMPOSIUM

November 20 and 21, 2010 is the annual International Fly Tying Symposium at the Double Tree Hotel in Somerset. Saturday hours are 9:00 am to 5:00 pm and Sunday 9:00 a, to 4:30 pm. Go to <http://internationalflytyingsymposium.com> for more information about speakers, classes and demonstrations!

PAY PAL ACCOUNT

Our chapter has opened a pay pal account. We hope that this will make it easier to pay chapter activity fees, pay for chapter trips, purchase Trout Unlimited merchandise and to make donations to the Bib Flatbrook Project!



North Jersey TU News.
Editor: Susan B. Reed.

North Jersey TU News is a publication of the Fred S. Burroughs, North Jersey Chapter of Trout Unlimited, P.O. Box 671, Sparta, New Jersey 07871.

Fred S. Burroughs Chapter Officers:

President: Dave King (973) 222-2114
Vice Pres.: Brian Cowden (201) 230-3383
Secretary: Susan Reed (908) 850-8773
Treasurer: Ken McDonald (973) 299-0686

North Jersey TU News is your publication. The chapter invites all members to contribute articles of general interest to the chapter. Please send all material to:

Susan B. Reed
6 Rushmore Lane
Hackettstown, New Jersey 07840
(908) 850-8773
e-mail sbreed@optonline.net

Deadline: 3rd Wed. of the month - for the following newsletter.

NORTH JERSEY TU NEWS

2010 CHAPTER ACTIVITY FEE— \$15

Mail To: TU - Fred S. Burroughs North Jersey Chapter
C/O Ken McDonald

16 Kirkbride Terrace Towaco, NJ 07082
Endorse check to "North Jersey TU"

Name _____

Street Address _____

City _____

State _____

Zip _____

Home Phone _____

Work Phone _____

E-mail address: _____

Fax: _____

Fee: _____ \$15 _____ \$25 _____ \$40 _____ \$50 _____ Other

CHAPTER ACTIVITY FEE

Donations and Activity Fees can now be paid with Credit Card or PayPal!

We have added new payment options for donations and activity fees on our website. Beginning last month, you can now donate and/or pay your activity fee with your Credit Card or PayPal. Visit our website - <http://www.nnjtu.org>, to begin using these new options. Rest assured that the process is very secure and confidential. You will receive a receipt for your **tax deductible** contribution via E-Mail.

Future payment options for other events and activities are also being considered: ie. Paying for the Annual Dinner, paying for merchandise sold via the chapter, paying for Chapter sponsored trips, etc.



CHAPTER LIBRARY

Remember, if you have any duplicate, or unwanted books, videos, or DVD's the chapter is starting a Chapter Library.

You can now check out materials just like a library. We have lots of books and videos to rent. See our website for our current library materials!

However, it won't work unless people like yourself donate an item or two.

TIC Egg Day will be on Wednesday, **October 27, 2010**. PLEASE check your calendars, and let TIC Coordinator Doug Riley know if you can help out. As you can see, we need a few more volunteers. Please feel free to volunteer for more than one school if they are in close proximity to each other.

First Name	Last Name	School Name	Address	City	DELIVERER
Deborah	Deangelis	Allamuchy Township School	PO Box J	Allamuchy	
Dawn	Boyer	Byram Intermediate School	12 Mansfield Dr.	Byram	
Rob	Henry	Glen Meadow Middle School	PO Box 515	Vernon	
JoAnn	Ostrowski	Helen Morgan School	100 Stanhope Rd	Sparta	<i>Brian Cowden</i>
Ed	Blevins	High Point Regional High School	299 Pidgeon Hill Rd.	Sussex	
Mary	Burns	Hopatcong H.S.	2A Windsor Ave.	Hopatcong	<i>John Nordstedt</i>
Mike	Michels	Indian Hills H.S.	97 Yawpo Ave.	Oakland	
Wendy	Towers	Jefferson Twp. MS	1000 Weldon Rd.	Oak Ridge	
Jeanne	Rennals	Macopin School	70 Highlander Dr.	W. Milford	
Michael	Malakuskie	Mt. Arlington Public Schools	235 Howard Blvd.	Mt. Arlington	
Madelyn	Santiago	North Dover Elementary School	51 Highland Ave.	Dover	
Dave	Misener	Sandshore School	498 Sandshore Rd.	Budd Lake	<i>John Nordstedt</i>
Marilyn	Steneken	Sparta Middle School	350 Main Street	Sparta	<i>Brian Cowden</i>
Scott	Kindler	Sparta Middle School	350 Main Street	Sparta	<i>Brian Cowden</i>
Kelly	Howell	Sussex Middle School	10 Loomis Ave.	Sussex	
Linda	Colananni	St. Michael School	10 Church Street	Netcong	
Ken	Strauss	Tinc Road School	24 Tinc Rd.	Flanders	<i>Brian Cowden</i>
Suzanne	Murphy	Tinc Road School	24 Tinc Rd.	Flanders	<i>Brian Cowden</i>
Denise	Doherty	Walnut Ridge Primary School	625 RTE 517	Vernon	



Efingers Sporting Goods

located at 513 West Union Avenue
Bound Brook New Jersey,
is having a:

**Special October Sale! 4 Days only starting
October 15**

30% off on all Orvis Rods! 40% for TU members!

20% off on all Orvis Reels! 30% to all TU members!

(Battenkill Barstock, Original Battenkill and Clearwater excluded from the sale)

40% off all Orvis waders! 30% off all other brands!

20% off wading jackets!

(The above sales cannot be combined and cannot be combined
with any other discounts)

AND THE WINNER IS

The NJDEP Division of Fish and Wildlife has announced that Gary Grimm of Flanders, NJ was the overall Grand Prize and Tournament Cup winner of the 19th annual Governor's Surf Fishing Tournament held on Sunday, October 3 at Island Beach State Park.

Mr. Grimm's winning catch was a 30½" striped bass. Mr. Grimm received a plaque along with two rod-and-reel combinations and will have his name engraved on the Governor's Cup, which is on permanent display at the park. Nineteen additional anglers also received rod and reel outfits for their prize-winning fish in the various species categories.

For a complete list of winners and more details about the event, visit <http://www.njfishandwildlife.com/news/2010/gsft10-winners.htm> on the division's web site.

FALL TROUT STOCKING

The NJDEP Division of Fish and Wildlife reminds anglers that the fall stocking of

trout in 16 streams and 16 lakes and ponds statewide will begin Tuesday, October 12, and continue through October 20.

Over this period approximately 21,000 trout averaging 14 to 16 inches and weighing 1½ - 2 pounds will be distributed. Additionally, 1,000 exceptionally large breeders, measuring 17-24 inches and weighing 3-8 pounds will be stocked. All trout are raised at the division's Pequest Trout Hatchery.

The stocking was postponed one week due to unseasonably high water temperatures. As anticipated, the cool weather pattern and recent rains significantly dropped water temperatures. Stream temperatures which measured in the upper 60s to 70 degrees are now down to the upper 50s - ideal conditions for trout stocking. The weather forecast looks favorable for anglers as well.

For more information on the fall stocking program, including the stocking schedule, visit http://www.njfishandwildlife.com/trtinfo_fall.htm on the division's website.



WANTED: NEW TIC COORDINATOR

As some of you may have already heard, our TIC Coordinator, Doug Riley is moving out of State. Doug, we will miss you terribly!

This leaves us in a pinch as we need to replace Doug as our TIC Coordinator. If you are interested in coordinating TIC programs for our Chapter, please call Dave King at (973) 222-2114.

The TIC coordinator works with Jessica Griglak of the New Jersey Division of Fish and Wildlife. Jessica Griglak runs the TIC program for the State of New Jersey and coordinates with each Chapter's TIC Coordinator.

The TIC program kicks off in September with the delivery of eggs to schools by chapter members, then is followed by the placement of onion sacs in streams to collect invertebrates, an entomology lecture at the school and is concluded by the releasing of the young fish into a local river.

Chapter members are assigned a school for these purposes. The TIC Coordinator simply need to coordinate our chapter volunteers as they are needed.

Chapter member John Nordstedt repairs all broken chillers, which unfortunately happens a lot. The TIC Coordinator also communicates with John when we have a chiller problem.

FALL FLATBROOK FLOAT STOCKING

As many of you may know, we as a chapter have been looking to start a float Stocking program on our home river, the Flatbrook. I have taken on the mantle of coordinator of the program and am happy to report that as of this date we have secured two (2) float boxes, and now need a few volunteers to help with the trial run of our program. At this point the date of the fall stocking **HAS BEEN CHANGED**, from October 5 to October 14, so mark your calendars. In addition to myself, we need 3 or 4 other people to handle the boxes and disperse the fish.

The plan for the day/morning is this: The first box along with it's tenders will meet the truck at the "Mud Hole", and from there load up with fish and proceed to the top of the Blewett Tract, from there we will walk down through the Blewett to Three Bridges. The Second box and it's tenders will start either at Three Bridges and walk down stream towards the Roy Tract, or they will meet the truck along the road that runs parallel to the river and start at the last point the truck can stock from and walk to Roy.

As I said, this is going to take place on Thursday October 14, as of yet I do not have an exact time, and frankly don't expect the "exact time" to be when the truck will show anyway....when I hear more on this I will inform all who are going to help. Looking forward to hearing from you, and seeing you on the 12th!--

- John Parisi

NORTH JERSEY TU NEWS

WHAT TO EXPECT DURING EGG DAY

For most of you, you have been through Egg Day before. But for those of you who are new this year, I would like to tell you how Egg Day works.

One hatchery staff member, plus myself and two members of Trout Unlimited will arrive at the hatchery at 7:00 am. Immediately, we will start packing the eggs. This is a very time consuming process, since we can only take out one tray of eggs at a time. The eggs must remain cool and moist and we have limited space.

Eggs are measured by volume per school per chapter. Those Trout Unlimited chapters who are furthest away will get their eggs first since they have the longest drive (and a lot of schools). Next, the chapters in the middle of the state will get their eggs and finally, those in north Jersey.

We also need to pack eggs up by chapter, so that everyone gets their eggs. There are more than 110 schools in the program. So, all together our egg packing will be several hours long.

As the chapters receive their eggs, they leave the hatchery up in Warren County and spread out to almost every county in the state, delivering their eggs.

When you arrive at the schools, you will need to check in at the main office, the teacher will need to be located, the eggs will need to be taken to the egg room, the

volunteers will show the students the difference between good and bad eggs and will help put the eggs in the tank. You must check to make sure that the tanks are the right temperature (50 degrees) and that the equipment is set up properly. All of this takes time.

It is difficult for our volunteers to predict when they will reach your classroom, so teachers must be patient.

Egg Day is October 27. It is our hope that all the eggs will be out of the hatchery by 9:00 am, but there are no guarantees. Volunteers, please be patient, you will get your eggs. There is no switching Egg Day to another date/time. After all the eggs have left the hatchery, teachers will get an email from me telling them that all eggs have left the building and that teachers can then calculate the hatch date of your eggs with the students.

Please remember that you should cool your tank down to 50 degrees a week before Egg Day. The reason the water needs to be so cold is because that is the temperature they are kept at the hatchery. Any water warmer than that would shock the eggs, possibly causing them not to hatch.

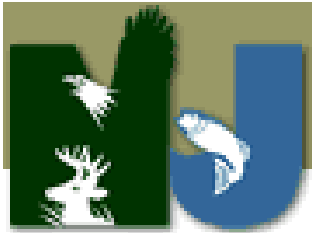
Jessica Michelle Griglak

NJ Division of Fish and Wildlife
Resource Interpretive Specialist
605 Pequest Rd.
Oxford, NJ 07863

ph. 908-637-4125
fax 908-637-6239

NORTH JERSEY TU NEWS

2011 FLATBROOK CREEL SURVEY



Principal Fisheries Biologist [Pat Hamilton](#) of the New Jersey Division of Fish and Wildlife will be conducting a creel survey on the Flatbrook next

year. Pat will need some volunteers to assist her. As the date for the survey nears, we will keep you posted as to the date and place.

URBANI FISHERIES STREAM SURVEY AND DESIGN

On the next page you will find a copy of the stream and survey and design we have submitted to the State of New Jersey for review. Come to the chapter meeting to review the survey. We are looking forward to hearing from the State if they have any changes or revisions.

We have already had one meeting with the DEP's Land Use regulatory agency. We hope to submit the DEP GP-16 permit in the very near future. This permit would be good for 5 years from the date of issuance, so we have ample time to complete our restoration project.

FLATBROOK FLOATSTOCKING UPDATE

Float stocking went well on October 14, 2010 thanks to John Parise's coordination with NJ F&W. We all felt we could use more fish for the 3 Bridges to Roy Bridge

tract, but we were able to get plenty of volunteers to help with the fall float and we learned a lot about spring stocking and how best to go about doing that next year. The Eagle Scout candidate that built the two float boxes is sincerely thanked for his time and effort in building our chapter two float boxes!

MANY THANKS

Many thanks to John Rogalo, President of the Morris Federation of Sportsmen's Clubs. Not only was he instrumental in getting us 3 new TIC programs funded in our chapter's area, but he also hooked us up with 4 large loads of free boulders for the Flatbrook project which we will need to stabilize the channels and build riffle structures that will scour deep pools for better year round trout habitat. Thank you John Rogalo!!

MANY MORE THANKS.....

The real kudos go to Chapter Member Gary Ervey of our stream committee who picked up those 4 loads of boulders and is storing them at his company's yard in Byram until we get state approval to move them up to the project sites. Thanks Gary!

FLY TYING CLASS

We are in the process of making plans to run another Fly Tying class for beginners and Intermediate students this February 2011. Stay posted for details to follow. If you are interested in either teaching or taking the class, please let Darren Rist know.



Urban Fisheries, LLC
 Fishery Construction
 Pond Design Construction
 River & Streambank Restoration
 108 North Star Lane
 Princeton, NJ 08540
 Phone: (609) 387-0388
 Fax: (609) 883-9136
 www.urbanfisheries.com

Drawn by: EW
 Approved by: JU
 Date: 9-25-10



Project Name:

**Cowden, Brian
 Trout Unlimited**

Flatbrook River
 Sussex County, NJ

Sheet Title:

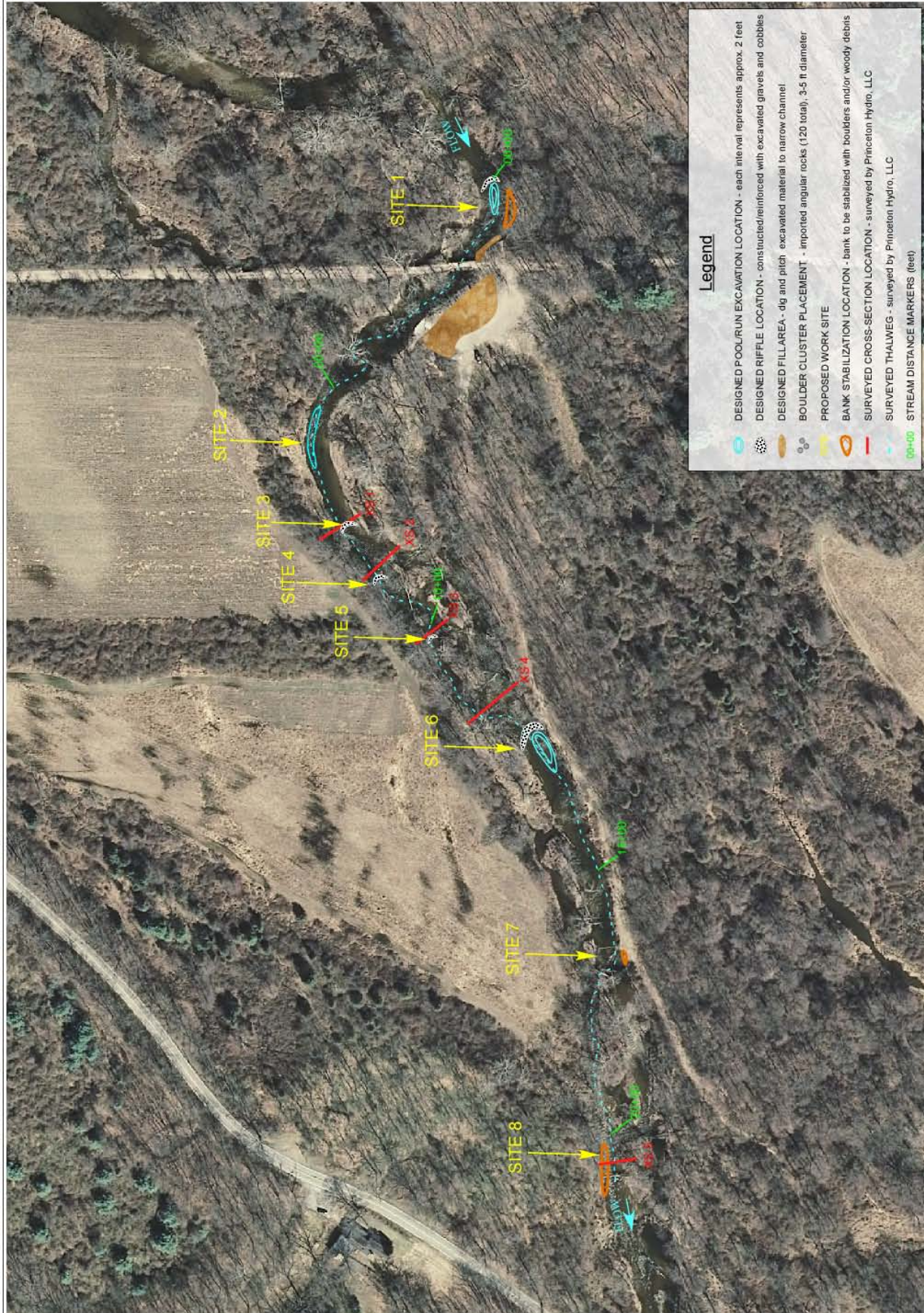
**CONCEPTUAL DESIGNS
 OF PROPOSED RIVER
 RESTORATION**

Sources:
 1. 2007 AERIAL PHOTOGRAPH,
 NEW JERSEY GEOGRAPHIC
 INFORMATION WEBSITE
 2. 2010 SURVEY PERFORMED
 BY PRINCETON HYDRO, LLC

Scale:
 1 in = 142 ft
 0 50 100 feet



Sheet #:
1 · 5



Legend

- DESIGNED POOL/RUN EXCAVATION LOCATION - each interval represents approx. 2 feet
- DESIGNED RIFFLE LOCATION - constructed/reinforced with excavated gravels and cobbles
- DESIGNED FILLAREA - dk and pitch excavated material to narrow channel
- BOULDER CLUSTER PLACEMENT - imported angular rocks (120 total), 3-5 ft diameter
- PROPOSED WORK SITE
- BANK STABILIZATION LOCATION - bank to be stabilized with boulders and/or woody debris
- SURVEYED CROSS-SECTION LOCATION - surveyed by Princeton Hydro, LLC
- SURVEYED THALWEG - surveyed by Princeton Hydro, LLC
- STREAM DISTANCE MARKERS (feet)

INSTALLING THE KIOSK



1. First, the holes were dug, and the frame of the Kiosk was put into place....



3. The cabinet portion of the kiosk was affixed to the frame of the kiosk.....



2. Then the roof was carefully lifted and secured into place.....



4. The kiosk was carefully painted.....



5. Lastly, a beautiful kiosk is now in place at Three Bridges on the Flatbrook!

Photos courtesy of Kenneth Gacek of Kenny G Photography. Thank you Ken!!

RIPARIAN TREE PLANTING



On November 7, 2010 our chapter will be conducting a riparian tree planting at the Three Bridges area of the Flatbrook River.

The State DF&W has surveyed the site with Brian Cowden of our chapter and has given us approval to plant.

However, they have required that we also remove all invasive species in the area.

We will have a few volunteers out on the steam on or about November 5, 2010 with a staff member from the State DF&W to remove invasive species before we plant.

The removal of the plants will be done with saws and pesticides.

On November 7, 2010 we encourage you to bring old waders, gloves, shovels, etc. Some of the trees we will be planting will require cages and stakes to prevent wild-life from eating them. So we will need some volunteers to cut the wire cages and put them together.

We are pleased that we have received a grant to purchase the trees and cover the costs of the stakes and wire cages.

SPEAKER

The October speaker is **Richard Thomas** of Central Jersey Trout Unlimited. Rich is also the Trout Unlimited National Leadership Council Representative for New Jersey.

Rich will speak to us on two topics. The first topic is the currents status of the Marcellus Shale mining projects in northern Pennsylvania and New York. Rich has a great power point presentation on the effects the mining process will have on our watersheds, including the Delaware River

and other smaller streams in New York and Pennsylvania.

The second topic Rich will speak on is the Trout Unlimited National Convention that was held last month. Many new issues and innovative ideas were round tabled at the convention.

Be sure to come out on **October 27, 2010** to hear Rich speak!





TRADITIONAL ANGLERS DAY

Shannon's Traditional Angler Day
& New Jersey Fly Fisherman of the Year Tournament
hosted jointly by The Raritan Inn & Shannon's Fly and Tackle

Saturday November 6th 2010

Traditional Angler Day celebrates the heritage of traditional fly fishing featuring the split cane bamboo fly rod and **supports** public awareness and enjoyment of fly fishing.

Hardy North America will showcase its famous traditional tackle as well as featuring its new 2011 offerings. For a list of additional vendors check our websites.

10 a.m. to 5 p.m. - Seminars and information exchange
(Casting, Cane rod ID and appraisal, Fly Tying, etc.)

Fly fishing for all guests from 2 p.m. to 5 p.m. on our private water. Catered Banquet with Cash Bar. from 5pm-9pm with Chinese Auction \$50.00 per person.

Trout Unlimited chapters and local watershed associations are invited to nominate one angler from each group to compete in the one-fly contest. The winner will be named "NJ Fly Fisherman of the Year" at the banquet in the evening.

Location: The Raritan Inn CR 513 Califon , New Jersey (908) 832-6869
Event and Ticket Information: Call Shannon 's Fly and Tackle (908) 832-5736
E-mail: shannonsfly@gmail.com
Sponsors: Hardy North America <http://fly.hardyfishing.com>

7:00	Registration Opens – Tourney nominees
7:45	Orientation
8:30-11:30	Opening Round
10:00- 5:00	Vendor Showcase Opens
11:00	Demonstrations and presentations begin
11:30-1:00	Cookout Lunch Available
12:30-2:00	Tourney FINALS- cut to final three
5:00 p.m.	Public Event ends
5:00 – 6:00	Cocktails*
6:00	Dinner*, Keynote, Awards presentation
All evening	Chinese Auction to benefit Trout Unlimited

OCTOBER MEETING AGENDA

**The Meeting Date has been changed
to October 27, 2010**

**SPEAKER: RICH THOMAS, Central Jersey TU
TU National Leadership Council**

FLOATSTOCK THE FLATBROOK—October 14, 2010

VOLUNTEER FOR TIC EGG DAY—October 27, 2010

TRADITIONAL ANGLERS DAY—November 6, 2010

RIPARIAN TREE PLANTING—November 7, 2010

BANQUET—MARCH 26, 2010



**Fred S. Burroughs
North Jersey Chapter
Trout Unlimited
P.O. Box 671
Sparta, New Jersey
07871**